



Revolution[®]

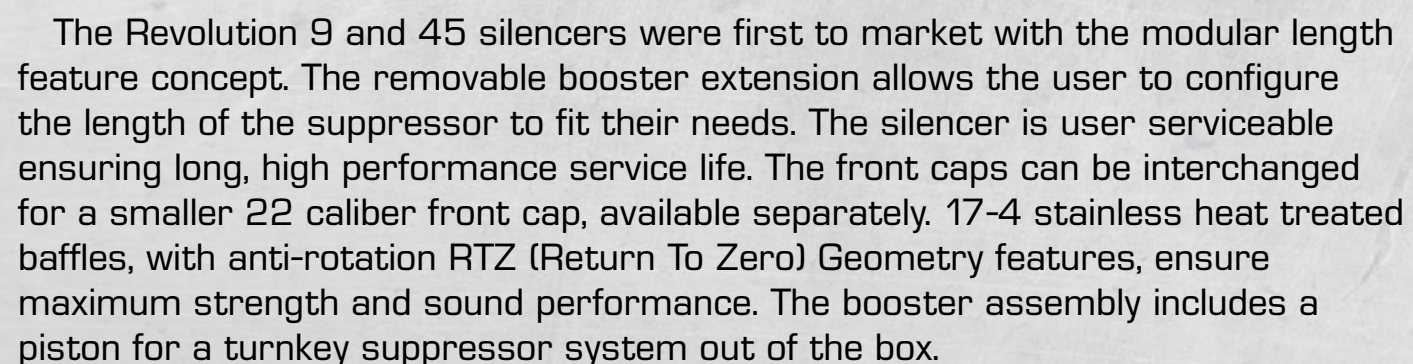
OWNERS MANUAL



**GRIFFIN
ARMAMENT**



Griffin Armament® has been satisfying customers for nearly two decades with cutting edge sound suppressors.



Neither the manufacturer nor reseller from whom you received the product(s) are responsible for any improper use or resulting damage. Firearms and their accessories can be dangerous if not handled correctly, and it is the user's own responsibility to understand this manual and product for safe operation. If there are any unanswered questions, Griffin's experienced customer service team will gladly assist at (262)-200-0003.



For a Technical Video on This Product Series

<https://vimeo.com/786063507>

The Revolution series of suppressors have included take down tools that allow for an easy and satisfying end user maintenance experience. Additional pistons, fixed barrel spacers, an integral 3 lug adapter, and fixed direct thread mounts are available to support the Revolution in any configuration the end user could desire. High quality, industry leading performance, strength, unparalleled feature functionality, build quality, and price make the Revolution a clear winner in the modular class of silencers.

REVOLUTION 9

7.65" x 1.375" x 11.7oz (Full)

6.15" x 1.375" 9.9oz (Short)

124 dB Full Config

127 dB Short Config

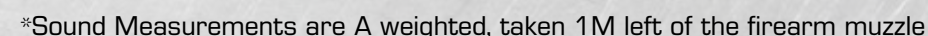


8.2" x 1.375" x 12oz (Full)

6.75" x 10.5oz (Short)

130 dB Full Config

138.5 dB Short Config



Taper Mount Blast Shield



CAM-LOK™
Adapter

EZ-LOK™
Adapter

DUAL-LOK™ Interface



RECOMMENDED TOOL KIT

The included Multi-Function wrench assists in installing 3 lugs products, removing booster housings, piston retainer removal, and opening your favorite bottled beverages. The full booster assembly does not include a piston, enabling the customer to purchase their desired system: CAM-LOK, EZ-LOK, or Direct Thread.

<https://www.griffinarmament.com/silencers-accessories/accessories/silencer-maintenance/>

Recommended additional silencer accessories that apply to Griffin Armament products can be found on our website at:

<https://www.griffinarmament.com/silencer-accessories/additional-silencer-accessories/>

These products are intended to provide users with a satisfactory shooting experience. The brushes are all that is needed to clean the internal bore of the mounting system. The Lok-Cease should be used on threads or tapers of the suppressor products. A light coat will ensure ease of suppressor removal after heavy use. Alignment rods are critical to use when mounting a suppressor to a host firearm for the first time. This precision ground tool will show the user if the suppressor and host are properly working together. Refer to page 7 for details.



1" Pipe Brush

Lok-Cease 20/20



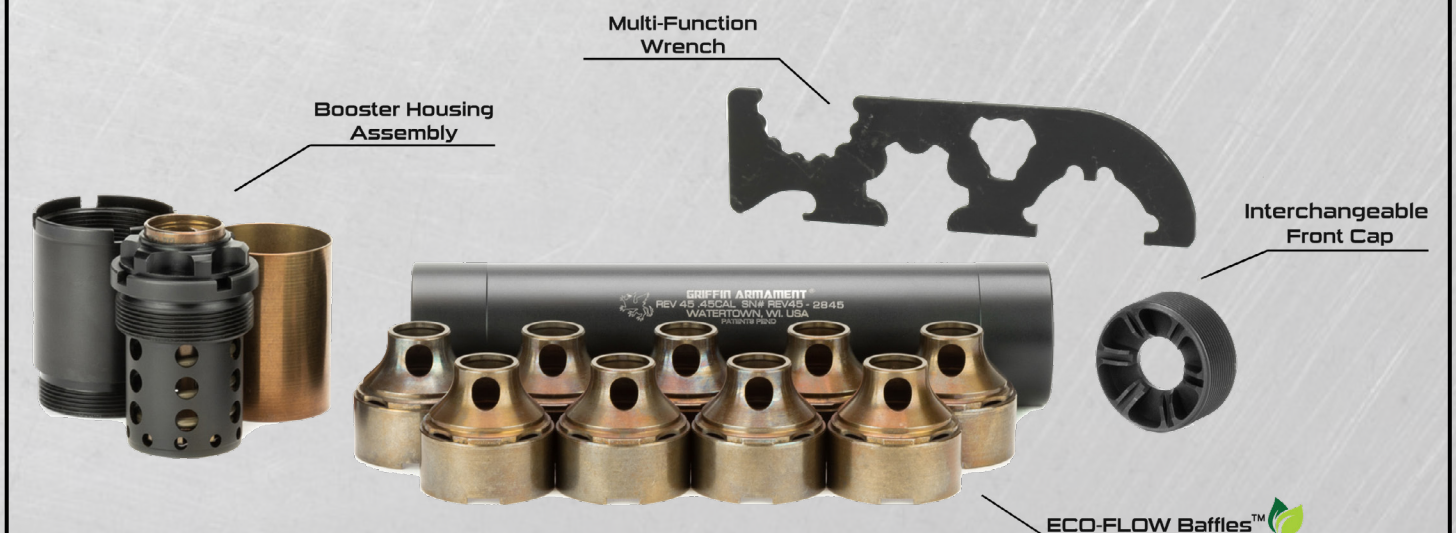
ALWAYS REMOVE THE MAGAZINE AND CLEAR THE CHAMBER BEFORE PERFORMING ANY FIREARMS OPERATION

PREPARATION & PRECAUTIONS

Upon assembly, be sure to tighten the booster assembly using the supplied 3 prong wrench. Tighten the end cap using the provided washer (see Figure 1). There is no torque rating for tightening the end cap or booster into the tube. Tightening should be done firmly by hand. Under fire, carbon deposits will assist in keeping the silencer parts assembled, however be sure to check after assembly, and some shooting, that the booster housing and end cap are still tight. **Failure to keep the parts tight may cause loosening of components and damage to the silencer and it's parts.** Baffles are keyed together to eliminate the possibility of rotating out of phase. This guaranties the best sound performance and accuracy is delivered to the user.

(Figure 1)

FEATURED TOOL KIT



Multi-Function Wrench

Booster Housing Assembly

Interchangeable Front Cap

ECO-FLOW Baffles™


MOUNTING & OPTIONS FOR THE SILENCER

The Revolution silencers can be configured with alternate pistons, direct thread inserts, front caps, and 3 Lug QD couplers available separately.


Using the appropriately threaded piston, mount the silencer tightly to the barrel. It is important to note that direct thread pistons can and often do come loose from the barrel threads. This is why we recommend the use of CAM-LOK or EZ-LOK accessories as these are far more secure. It is important to periodically check to ensure that the silencer is tightly attached to the host firearm. For 3 lug application this is not the case. 3 lug mounting provides a secure worry free QD attachment applicable to fixed barrel firearms only. Tilting barrel pistols such as Glocks or 1911's require the booster piston assembly in order to function properly. Firing a booster piston configured pistol silencer on a fixed barrel firearm will cause damage to the silencer and parts. The fixed barrel spacer (part # GAFS) is applicable only to pistol cartridges.




*EXAMPLES



EZ-LOK™ is comprised of two parts: the male barrel adapter and the female piston. This interface gives the ability to convert the suppressor to a much faster and more secure mounting solution (than direct thread pistons) on fixed barrel pistols. This Direct Thread to EZ-LOK™ Universal Adapter allows you to convert 1/2x28 or 5/8x24 threaded suppressors to receive EZ-LOK™ barrel adapters.



CAM-LOK® universal piston system is also comprised of two parts: the piston and the barrel adapter. This system provides a rapid, secure attachment to the host pistol. The piston is universal; accommodating any pistol mounted with a 3 Lug universal barrel adapter. Suppressors supported by this piston family will benefit from the interchangeability of these barrel adapters.



3 Lug interface assembly is an integral grouping which adds minimal length to the suppressor. This kit allows for QD mounting of many Griffin suppressors. Our 3 lug adapter requires minimal deflection of the spring bushing for installation, in some cases negating the need to modify hand stops and grips that come close to the 3 lug adapter.

* Additional mounts, front caps, and other accessories and how to install them can be found on our website: <https://www.griffinarmament.com/silencers/pistol-silencers/revolution-modular-silencers/>



IMPROPER ALIGNMENT CAN CAUSE PERMANENT
DAMAGE TO YOUR SUPPRESSOR

CONFIRM ALIGNMENT BEFORE INITIAL USE

With the Revolution silencer firmly tightened onto the mount, use a Griffin alignment check rod. Confirm visual alignment by ensuring the bore of the silencer is in the center of the bore of the firearms barrel. Failure to align properly may result in catastrophic failure. Gunsmiths can provide this service, or you can use a Suppressor Alignment Check Rod, which can be found on our website for an easier confirmation at:

www.griffinarmament.com/suppressor-alignment-check-rod/



PERFECT



ACCEPTABLE



MISALIGNED

Check rods are the most accurate and safe tool for assuring your silencer has a safely shootable bore condition. Installation and use of this tool is simple and should prevent baffle strikes or any unexpected issues once you get to the range.

Griffin Armament has gone to great lengths to manufacture a precision ground lab grade check rod which can quickly and easily prove alignment. These rods can be bent very easily however and must be handled with extreme care in order to remain useful. Store on a flat supportive surface in a dry climate.

HOW TO USE SUPPRESSOR ALIGNMENT CHECK RODS:

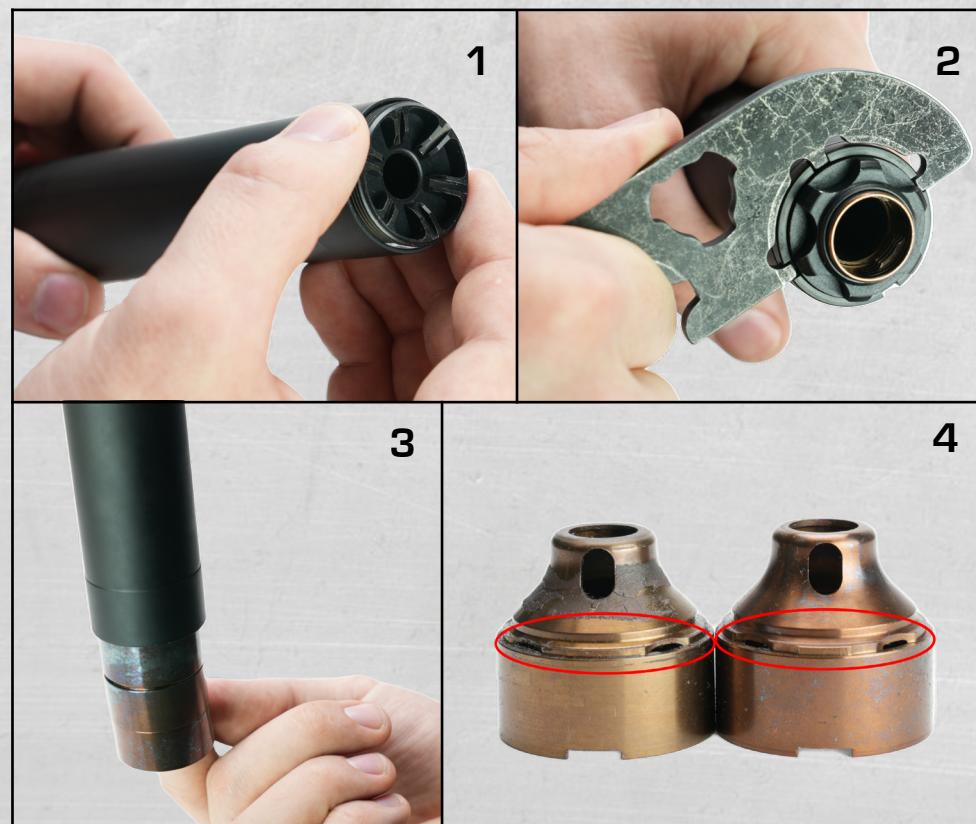
- Properly mount your silencer to the host firearm.
 - Insert check rod down bore of the silencer and into the host firearm bore until the end of the rod is flush with the end cap.
 - Observe alignment and confirm rod is positioned near the center of the silencer bore (refer to images above).
 - Host firearm may need to be rotated around bore to confirm alignment due to tolerance between the bore and check rod.
 - If the mount and silencer are in alignment the rod will not touch the suppressor.
- Remove the rod before shooting!
- If the rod is touching contact your gunsmith for trouble shooting. Typically the threads are in need of repair.



FAILURE TO KEEP PARTS TIGHT MAY CAUSE LOOSENING OF COMPONENTS AND DAMAGE THE SILENCER

DISASSEMBLY OF THE SUPPRESSOR

- 1) Start by unscrewing the end cap, using the provided 2" fender washer. After a moderate amount of fire, the baffles may need to be pushed out of the rear, or tapped out using a rubber mallet and wooden dowel.
- 2) Using the 3 prong armorers tool, unscrew the booster housing from the tube. The piston retainer can be removed from the booster housing using the included Multi-Function wrench.
- 3) Clean all parts thoroughly, being sure to focus on thread interfaces, and baffle alignment / interfacing geometry. Cleaning brushes can be found on the Griffin website:
<https://www.griffinarmament.com/silencer-maintenance-brushes/>
- 4) Re-assembly is the reverse order. Make sure that the first baffle in the silencer has **NO** key feature. There is only one like this: the blast baffle.



FAILURE TO PROPERLY RE-ASSEMBLE YOUR BAFFLES MAY CAUSE DAMAGE TO YOUR SILENCER OR FIREARM

FIRST ROUND FLASH ELIMINATION - DUTY APPLICATIONS ONLY

There are two methods Griffin recommends for wetting your suppressor to eliminate 1st round muzzle flash. The first method would be to detach the suppressor and rotate at a 45 degree angle while pouring 5cc's of water slowly into the mount interface. Ensure the bores are drained of all excess water. Then mount the suppressor. **DRAINING EXCESS WATER** is critical to ensure that water does not seep back into the bore causing potential barrel damage. The second method is to submerge your suppressor entirely detached from host firearm. Shake the suppressor vertically multiple times to allow excess water to drain, end cap up. From here, simply install the suppressor and fire as normal. Accuracy and point-of-impact shift should be completely unaffected.

CLEANING THE SUPPRESSOR

Clean and re-apply Lok-Cease to the mount interface of the silencer after every use to prevent your suppressor from becoming stuck on the muzzle device. Remove excess carbon from the muzzle device interface as well as the baffles and internal tube bore with a fine brass wire brush. No other maintenance is required with this silencer. Pipe cleaning brushes can be used to clean the inside mount interface, and internal bore of the suppressor. **DO NOT USE** course or medium wire wheels or steel brushes, as this can cause damage to fine threads.



CALIBER RATINGS BASED ON CONFIGURATION

Current generation Revolution suppressors feature 7075 billet aluminum tube housings which are extremely strong. As such we are able to rate our pistol suppressors for many high pressure rifle calibers for sporting use. (sporting use by our definition is 5-7 rounds of fire followed by allowing the suppressor to cool back to ambient temp). This sporting use allows much more flexibility with Griffin pistol suppressors than almost any other market options. Whether target shooting or hunting, Griffin pistol suppressor durability adds a dynamic to the pistol suppressor class of products not commonly found on the market.

With Mini Blast Shield, A2 mount adapter, or DUAL-LOK mount:

- * 300 BLK Super 9"
- * 5.56mm 11.5"
- * 7.62x39 14.5"
- * 308 WIN 18"

With 3 Lug mounts or Plan A:

- * 300 BLK Sub 8"
- * 300 BLK 16" Super
- * 5.56mm 16"

With K Configuration & K-Spacer or Mini Blast Shield:

- * 300BLK Sub/Super 16"
- * 5.56mm 16"
- * 7.62x39 16"
- * 308 WIN 20"

With EZ-LOK, CAM-LOK, or Direct Thread Pistons:

- * No barrel restrictions for any pistol calibers for any pistons

* Denotes sporting use only (5-7 rounds of fire followed by allowing the suppressor to cool back to ambient temp). High temperatures can compromise the strength of the tube material over time and is not recommended or warranted.

WARRANTY STATEMENT

PRODUCT LIFETIME LIMITED WARRANTY

Subject to the limitations outlined below, Griffin Armament will repair or replace free of charge any product we manufacture for the duration of this lifetime warranty. This warranty is unlimited in duration and covers at Griffin Armament’s sole discretion, service, repair, and/or replacement of damaged products caused by normal use. Any repair not covered by the warranty will be billed at a maximum of 30% of current MSRP for a comparable product, subject to BATFE transfer fees as required.

LIMITATIONS

Griffin Armament’s warranty does not cover loss, normal wear, damage to our product or the host weapon system resulting in whole or in part from abusive or negligent use, unauthorized modification, improperly threaded barrels, improperly mounted suppressors, improperly loaded or re-loaded ammunition, or neglect. Finish wear is cosmetic and is not covered by this warranty. Any repairs to the unit made necessary by the above mentioned factors may be invoiced to the owner at a maximum of 30% of current MSRP for the most comparable product. The individual barrel lengths and calibers warranted are listed in the manual you receive with your product, or on the product page (applicable only to the most current model of the respective product). In all cases refer to the product manual for product limitations prior to using a Griffin Armament product. Warranty is subject to change without notice.

To learn more about Griffin Armament® and the kit we provide, please visit us on the web at www.GriffinArmament.com or keep track of our social media pages:

Instagram



Facebook



YouTube



Rumble





CS@GRIFFINARMAMENT.COM

(262)200-0003

Watertown, WI 53094

GRIFFIN
GENERAL
ISSUE
PROGRAM



**GRIFFIN
ARMAMENT**

