



SPORTSMAN

ULTRA LIGHT HD

OWNERS MANUAL



**GRIFFIN
ARMAMENT**

SPORTSMAN

ULTRA LIGHT HD

INSTALLATION & MAINTENANCE GUIDE



**FAILURE TO READ AND UNDERSTAND THIS MANUAL
PRIOR TO USE MAY RESULT IN INJURY OR DAMAGE**

WELCOME

Griffin Armament® has been satisfying customers for nearly two decades with innovative and cutting edge sound suppressor technology.



The Sportsman series was built on years of prior experience and R&D with tubeless designs. Griffin designed the first tubeless silencers in the US and, although relatively featureless, provided the most optimal strength to weight ratio of any construction method seen before. With a solid background in suppressor engineering, Griffin created the Sportsman Ultra Light HD series with hunters in mind, knowing that ounces are pounds while trekking landscapes with gear.

DISCLAIMER

Neither the manufacturer nor reseller from whom you received the product(s) are responsible for any improper use or resulting damage. Firearms and their accessories can be dangerous if not handled correctly, and it is the user's own responsibility to understand this manual and product for safe operation. If there are any unanswered questions, Griffin's experienced customer service team will gladly assist at (262)-200-0003.

Still have questions? Check out our [video channel](https://vimeo.com/780806859) for an in-depth briefing on all products and accessories.

For More Info on This Product Series

<https://vimeo.com/780806859>

PRODUCT SYNOPSIS

The Sportsman series is fully CNC machined and laser welded to reduce weight, but increase overall durability of the suppressor. Every component in the Sportsman is manufactured from solid, high temperature corrosion resistant 17-4 Stainless Steel, and then H900 heat treated to ensure maximum service life is provided. Years of testing has found 17-4 stainless steel to last longer than 718 Inconel and is twice as strong as cast Stellite 6, used by some industry companies.

* MODEL SPECIFICATIONS

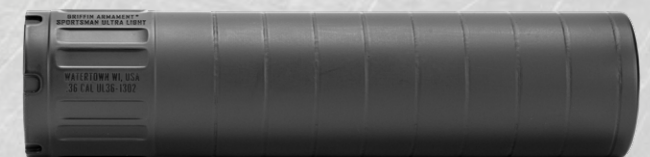
SPORTSMAN .30

6.09" x 1.5" 11.8oz



SPORTSMAN .36

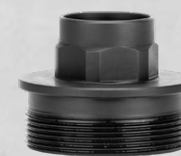
6.09" x 1.5" 12.2oz



*Weight displayed factors in the included Direct Thread Adapter

ADDITIONAL COMPATIBLE DEVICES - FULL LIST ON WEBSITE

EZ-LOK
Adapter



Minimalist Stealth
Flash Suppressor 77



Stealth Flash
Suppressor 2.25"



ADDITIONAL MOUNTING OPTIONS



PLAN-A™ Taper Mount Adapter for 1.375x24 threaded suppressors allows compatibility with: the Taper Mount EZ Brake™, Taper Mount Minimalist Stealth Flash Suppressor, Taper Mount Paladin® 2 Port Brake, Taper Mount Hammer Comp, & ALL Taper Mount Direct Thread Adapters.



EZ-LOK™ Mount Interface 1.375x24 allows compatibility with the EZ-LOK™ barrel adapter.



PLAN-A™ XL Taper Mount Adapter for 1.375x24 threaded suppressors allows compatibility with: the Taper Mount Tactical Compensator, Taper Mount Stealth Flash Suppressor (2.25"), Taper Mount Linear Compensator, & Taper Mount Flash Comp.



A2 Adapter for 1.375x24 suppressors allows compatibility with: our 30SD Flash Comp, M4SD Flash Comp, M4SD Hammer Comp, & other A2 compensators (must be within mil-spec). **Minimum barrel length: 10.5" 5.56/.223**

Pictured: Sportsman Ultra Light HD .30 & Compatible Muzzle Devices



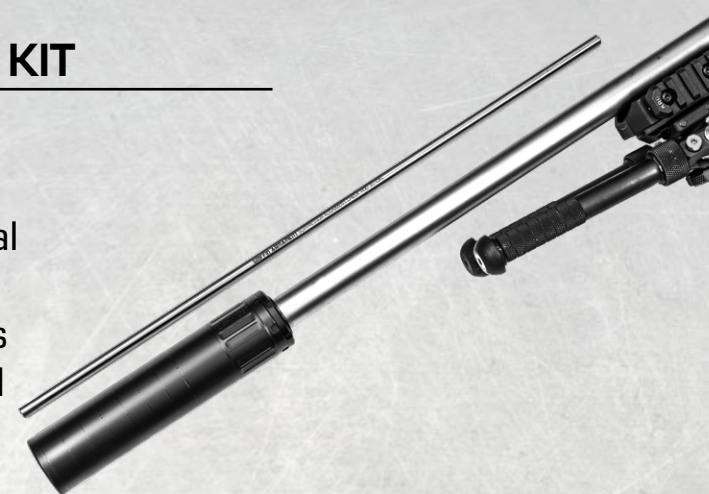
RECOMMENDED TOOL KIT

The Sportsman series of suppressors are fully CNC machined and laser welded for maximum thermal transfer and durability. This means there's very few additional accessories needed. However, some recommended tools for improving your shooting experience would consist of Alignment Check Rods, Cleaning Brushes, Anti Seize, or Griffin's Silencer Armorer's Tool Kit.

<https://www.griffinarmament.com/silencers-accessories/accessories/silencer-maintenance/>

Recommended additional silencer accessories that apply to Griffin Armament products can be found on our website at:

<https://www.griffinarmament.com/silencer-accessories/additional-silencer-accessories/>



1" Pipe Brush



Lok-Cease 20/20

These products are intended to provide users with a satisfactory shooting experience. The brushes are all that is needed to clean the internal bore of the mounting system. The Lok-Cease should be used on threads or tapers of the suppressor products. A light coat will ensure ease of suppressor removal after heavy use. Alignment rods are critical to use when mounting a suppressor to a host firearm for the first time. This precision ground tool will show the user if the suppressor and host are properly working together. Refer to page 6 for details.



**IMPROPER ALIGNMENT CAN CAUSE PERMANENT
DAMAGE TO YOUR SUPPRESSOR**

CONFIRM ALIGNMENT BEFORE INITIAL USE

With the Sportsman silencer firmly tightened onto the mount, use a Griffin alignment check rod. Confirm visual alignment by ensuring the bore of the silencer is in the center of the bore of the firearms barrel. Failure to align properly may result in catastrophic failure. Gunsmiths can provide this service, or you can use a Suppressor Alignment Check Rod, which can be found on our website for an easier confirmation at:

www.griffinarmament.com/suppressor-alignment-check-rod/



PERFECT



ACCEPTABLE



MISALIGNED

Check rods are the most accurate and safe tool for assuring your silencer has a safely shootable bore condition. Installation and use of this tool is simple and should prevent baffle strikes or any unexpected issues once you get to the range.

Griffin Armament has gone to great lengths to manufacture a precision ground lab grade check rod which can quickly and easily prove alignment. These rods can be bent very easily however and must be handled with extreme care in order to remain useful. Store on a flat supportive surface in a dry climate.

HOW TO USE SUPPRESSOR ALIGNMENT CHECK RODS:

- Properly mount your silencer to the host firearm.
- Insert check rod down bore of the silencer and into the host firearm bore until the end of the rod is flush with the end cap.
- Observe alignment and confirm rod is positioned near the center of the silencer bore (refer to images above).
- Host firearm may need to be rotated around bore to confirm alignment due to tolerance between the bore and check rod.
- If the mount and silencer are in alignment the rod will not touch the suppressor.

Remove the rod before shooting!

- If the rod is touching contact your gunsmith for trouble shooting. Typically the threads are in need of repair.



**FAILURE TO PROPERLY MOUNT YOUR SILENCER MAY
CAUSE DAMAGE TO YOUR SILENCER OR FIREARM**

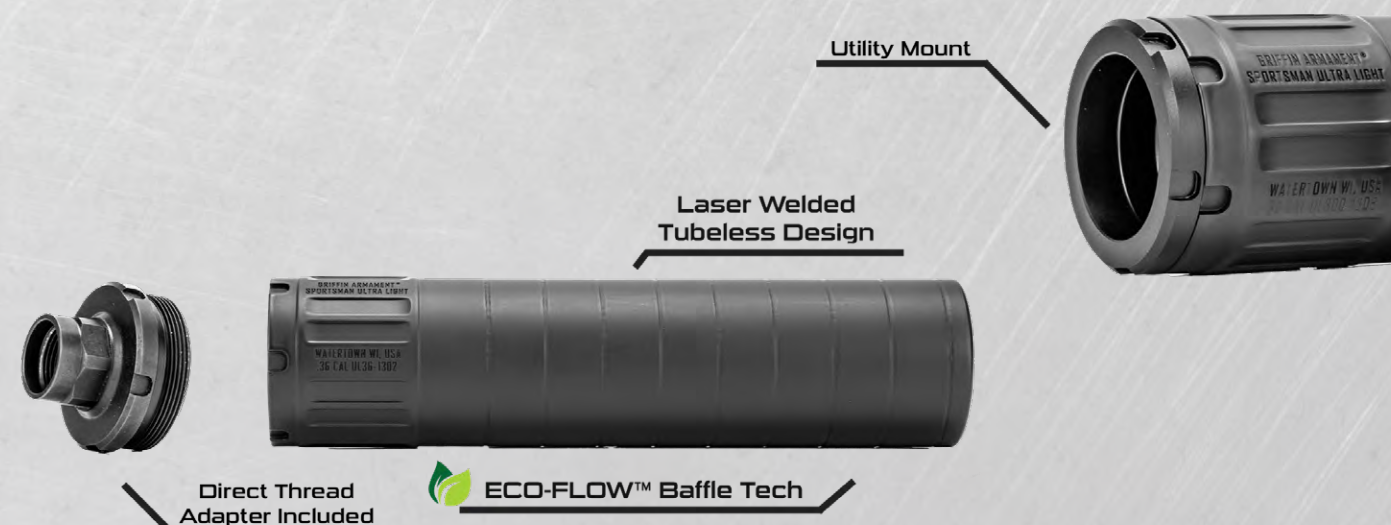
MOUNTING DIRECT THREAD

1) Clean and degrease barrel threads. Device is installed correctly when fully twisted hand tight.

2) Direct Thread suppressors are extremely easy to use. Simply put the silencer over the mount, gently feel for the thread, making sure not to cross-thread, and screw the can onto the mount. Ensure the silencer is snug hand tight to the mount. The threads will provide a non-mechanical lock. This has been proven for years to include rigorous full auto testing to be a solid mount that will not back off under firing.

3) Once done firing, allow suppressor to cool as durable suppressors can reach temperatures in excess of 1000° F under normal use. After the suppressor has cooled to ambient temperature firmly grasp silencer body and unscrew from mount. It is important to clean the mount of the silencer interface after every use. Applying a light coat of high temperature anti seize to the threads will make your suppressor much easier to remove from the firearm and clean after extended shooting sessions.

KEY FEATURES





ALLOW SUPPRESSOR TO COOL TO AMBIENT TEMPERATURE BEFORE DISMOUNTING

FIRST ROUND FLASH ELIMINATION - DUTY APPLICATIONS ONLY

There are two methods Griffin recommends for wetting your suppressor to eliminate 1st round muzzle flash. The first method would be to detach the suppressor and rotate at a 45 degree angle while pouring 5cc's of water slowly into the mount interface. Ensure the bores are drained of all excess water. Then mount the suppressor. **DRAINING EXCESS WATER** is critical to ensure that water does not seep back into the bore causing potential barrel damage. The second method is to submerge your suppressor entirely detached from host firearm. Shake the suppressor vertically multiple times to allow excess water to drain, end cap up. From here, simply install the suppressor and fire as normal. Accuracy and point-of-impact shift should be completely unaffected.

CLEANING THE SUPPRESSOR

Clean the mount interface of the silencer and the muzzle device after every use. Failure to clean the mount can result in your suppressor becoming stuck on the muzzle device. An Oatey 1" pipe cleaning brush can be used to clean the inside of Taper Mount interfaces of the suppressor. The inside bore of the silencer tube body can be cleaned using a 1.5" & 1.25" pipe cleaning brush. Various brushes for cleaning are available on our [website](#). To clean baffles, a tumbler, ultrasonic cleaner, or a brush and oil can be used. Use of an anti-seize type product on the thread interfaces will allow for easier disassembly and maintenance.



WARRANTY STATEMENT

PRODUCT LIFETIME LIMITED WARRANTY

Subject to the limitations outlined below, Griffin Armament will repair or replace free of charge any product we manufacture for the duration of this lifetime warranty. This warranty is unlimited in duration and covers at Griffin Armament's sole discretion, service, repair, and/or replacement of damaged products caused by normal use. Any repair not covered by the warranty will be billed at a maximum of 30% of current MSRP for a comparable product, subject to BATFE transfer fees as required.

LIMITATIONS

Griffin Armament's warranty does not cover loss, normal wear, damage to our product or the host weapon system resulting in whole or in part from abusive or negligent use, unauthorized modification, improperly threaded barrels, improperly mounted suppressors, improperly loaded or re-loaded ammunition, or neglect. Finish wear is cosmetic and is not covered by this warranty. Any repairs to the unit made necessary by the above mentioned factors may be invoiced to the owner at a maximum of 30% of current MSRP for the most comparable product. The individual barrel lengths and calibers warranted are listed in the manual you receive with your product, or on the product page (applicable only to the most current model of the respective product). In all cases refer to the product manual for product limitations prior to using a Griffin Armament product. Warranty is subject to change without notice.

To learn more about Griffin Armament® and the kit we provide, please visit us on the web at www.GriffinArmament.com or keep track of our social media pages:

Instagram



Facebook



YouTube



Rumble





CS@GRIFFINARMAMENT.COM

(262)200-0003

Watertown, WI 53094

GRIFFIN
GENERAL
ISSUE
PROGRAM



**GRIFFIN
ARMAMENT**

