



CHECKMATE-HD

OWNERS MANUAL



**GRIFFIN
ARMAMENT**

CHECKMATE-HD

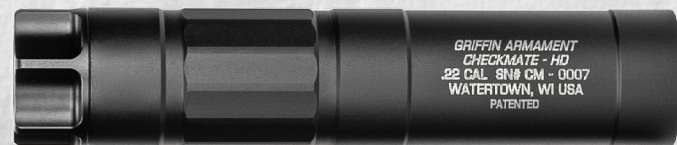
INSTALLATION & MAINTENANCE GUIDE



FAILURE TO READ AND UNDERSTAND THIS MANUAL PRIOR TO USE MAY RESULT IN INJURY OR DAMAGE

WELCOME

Griffin Armament® has been satisfying customers for nearly two decades with innovative and cutting edge sound suppressor technology.



Griffin Armament is releasing the CHECKMATE-HD™ suppressor, a 5.8 ounce 5.7x28 pistol rated rimfire suppressor with CARBON-GARD™ technology - the subject of a pending patent. The 5.8 ounce, 5.04" overall length, suppressor, features a 17-4 heat treated ECO-FLOW™ baffle system, front cap, and integrated EZ-LOK™ QD mounting system. The tube is 7075-T6 billet machined and hardcoat anodized for maximum strength. Extensive workup was done to the baffle system resulting in a baffle system with zero first round pop and a market leading sound pressure level (SPL) on rifles and pistols. The CHECKMATE-HD™ is the new market leader in rimfire suppressors.

DISCLAIMER

Neither the manufacturer nor reseller from whom you received the product(s) are responsible for any improper use or resulting damage. Firearms and their accessories can be dangerous if not handled correctly, and it is the user's own responsibility to understand this manual and product for safe operation. If there are any unanswered questions, Griffin's experienced customer service team will gladly assist at (262)-200-0003.

Still have questions? Check out our [video channel](#) for an in-depth briefing on Griffin's products and accessories.



PRODUCT SYNOPSIS

The CARBON-GARD™ technology seals the entire baffle core with high temperature Silicone O-Rings. This allows the suppressor to be more user maintenance friendly than any other rimfire suppressor on the market. After 2000 rounds are fired, the inside diameter of the tube and outside diameter of the core are still spotlessly clean for ease of disassembly without specialized tools other than a US Quarter.

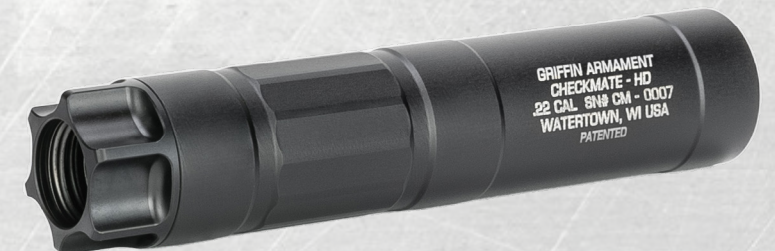
* MUZZLE SPL & SPECIFICATIONS

CHECKMATE-HD

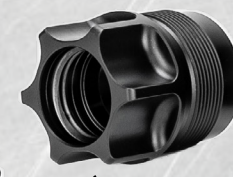
114 DB SPL on .22lr Pistol 4"
114 DB SPL on .22 Rifle 16"

5.0" x 1.07" x 5.8oz

*Sound Measurements are A weighted,
taken 1M left of the firearm muzzle



EZ-LOK™ Adapter



QD Interface



CARBON-GARD™

Flash Reduction Cap

KEY FEATURES

- EZ-LOK™ QD mounting interface and adapter included
- Taper locking QD interface ensures security and accuracy
- Unique patent pending CARBON-GARD™ tech offers an unbeatable user maintenance experience
- Premium 17-4 H900 heat treated stainless steel & 7075-T6 outer tube
- Patent pending ECO-FLOW™ baffle system for reduced blow back and optimally tuned sound performance
- Patented flash reducing tool-less end cap
- PVD and hardcoat anodize provide increased surface hardness, corrosion, and wear resistance
- Warrantied for life with Griffin's Perpetual Lifetime Warranty



ALWAYS CLEAR THE FIREARM PER MANUFACTURER'S MANUAL
BEFORE PERFORMING MAINTENANCE OR MODIFICATIONS

INCLUDED ACCESSORIES

The CHECKMATE-HD comes with an EZ-LOK 1/2x28 coupler and is field ready out of the box. The only supporting accessory outside of various threaded barrel end couplers, is a CAM-LOK® rear mount, making this suppressor very simple, and straightforward for end users to understand and utilize. Unbeatable sound performance, unparalleled ease of maintenance and servicing, light weight, high strength, historically accurate CHECKMATE-QD mounting, and incredibly competitive pricing are the user benefits of the CHECKMATE-HD suppressor.

EZ-LOK ADAPTER MOUNTING

The EZ-LOK barrel adapter should be installed with 22ft/lbs of torque to the host barrel using a 3/4" socket and needle type torque wrench (see Fig 1 on next page). No thread locking compound is required or suggested, especially on pistols which need to be field stripped for cleaning. Once installed on the host firearm, the suppressor should be firmly attached to ~13.75in -24in/lbs of force to the barrel adapter. It should not be too tight or too loose. You will feel the tapers engage and tighten.



RECOMMENDED TOOL KIT

The CHECKMATE-HD fresh out of the box can operate with nothing more than a US quarter and your hands, though we suggest checking the Griffin website for additional tools that will assist in a satisfactory shooting experience.

<https://www.griffinarmament.com/silencers-accessories/accessories/silencer-maintenance/>

Recommended additional silencer accessories that apply to Griffin Armament products can be found on our website at:

<https://www.griffinarmament.com/silencer-accessories/additional-silencer-accessories/>



These products are intended to provide users with a satisfactory shooting experience. **Cleaning brushes** are all that is needed to clean the internal bore of the suppressor tube. **Lok-Cease 20/20** should be used on threads or tapers of the suppressor products. A light coat will ensure ease of suppressor removal after heavy use. **Suppressor alignment check rods** are critical to use when mounting a suppressor to a host firearm for the first time. This precision ground tool will show the user if the suppressor and host are properly working together. Refer to page 6 for details.



**IMPROPER ALIGNMENT CAN CAUSE PERMANENT
DAMAGE TO YOUR SUPPRESSOR**

CONFIRM ALIGNMENT BEFORE INITIAL USE

With the CHECKMATE-HD silencer firmly tightened onto the mount, use a Griffin alignment check rod. Confirm visual alignment by ensuring the bore of the silencer is in the center of the bore of the firearms barrel. Failure to align properly may result in catastrophic failure. Gunsmiths can provide this service, or you can use a Suppressor Alignment Check Rod, which can be found on our website for an easier confirmation at:

www.griffinarmament.com/suppressor-alignment-check-rod/



PERFECT



ACCEPTABLE



MISALIGNED

Check rods are the most accurate and safe tool for assuring your silencer has a safely shootable bore condition. Installation and use of this tool is simple and should prevent baffle strikes or any unexpected issues once you get to the range.

Griffin Armament has gone to great lengths to manufacture a precision ground lab grade check rod which can quickly and easily prove alignment. These rods can be bent very easily however and must be handled with extreme care in order to remain useful. Store on a flat supportive surface in a dry climate.

HOW TO USE SUPPRESSOR ALIGNMENT CHECK RODS:

- Properly mount your silencer to the host firearm.
- Insert check rod down bore of the silencer and into the host firearm bore until the end of the rod is flush with the end cap.
- Observe alignment and confirm rod is positioned near the center of the silencer bore (refer to images above).
- Host firearm may need to be rotated around bore to confirm alignment due to tolerance between the bore and check rod.
- If the mount and silencer are in alignment the rod will not touch the suppressor.

Remove the rod before shooting!

- If the rod is touching contact your gunsmith for trouble shooting. Typically the threads are in need of repair.

DISASSEMBLY & ASSEMBLY OF THE SUPPRESSOR

1) DISASSEMBLY

Using a coin such as a quarter, unscrew the front cap (Fig 2). After the front cap is removed unscrew the rear EZ-LOK mount interface from the tube body. The mount is O-Ring seated into the baffle stack and once unscrewed the rear mount and baffle stack will easily slide out as an assembly (Fig 3). Take apart baffles as necessary if cleaning.

2) CLEANING & MAINTENANCE

Recommend interval for cleaning is every 2,000 rounds. Rimfire ammo is very dirty, so rimfire suppressors should be cleaned intermittently. Take all baffles apart and clean with your desired method such as a brass brush or an ultra-sonic cleaner (Fig 4). O-Rings should be replaced as required. Once clean, reassemble in numerical order as shown (Fig 3). Make sure the line next to the numbers on each baffle is aligned. This ensures best sound performance. The EZ-LOK interface and adapter should be cleaned and lubricated. Ensure that the tapers on both are clean and lubed with a grease or anti-seize product.

3) RE-ASSEMBLY

Press all baffles together, press rear mount onto #1 baffle, and insert stack into tube and screw down. Lubricate O-Ring on end cap and slowly/smoothly screw together with quarter (Fig 3).

FIGURE 3



FIGURE 4



FIGURE 2



O-RING REPLACEMENT

Every 2,000 rounds, we recommend cleaning your baffles. After multiple times breaking down the suppressor, O-Rings will become worn and will need replacement. Using a general purpose metal pick tool, gently pull O-Rings off and replace as necessary.

[CLICK HERE FOR REPLACEMENT O-RINGS](#)



CLEANING INTERFACES

Clean the mount interface of the silencer and the muzzle device after every use. Failure to clean the mount can result in your suppressor becoming misaligned on the muzzle device. An Oatey 1" pipe cleaning brush can be used to clean the inside of the tube body of the suppressor. Various brushes for cleaning are available on our [website](#). Use of an anti-seize type product on the thread interfaces will allow for easier disassembly and maintenance.

FIRST ROUND POP

Built on technology related to a recent note-able baffle patent, and with pending patents on the mounting system and user serviceable technology, this suppressor delivers unbeatable performance and value, and eliminates first round pop entirely.

WARRANTY STATEMENT

PRODUCT LIFETIME LIMITED WARRANTY

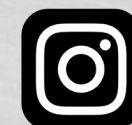
Subject to the limitations outlined below, Griffin Armament will repair or replace free of charge any product we manufacture for the duration of this lifetime warranty. This warranty is unlimited in duration and covers at Griffin Armament's sole discretion, service, repair, and/or replacement of damaged products caused by normal use. Any repair not covered by the warranty will be billed at a maximum of 30% of current MSRP for a comparable product, subject to BATFE transfer fees as required.

LIMITATIONS

Griffin Armament's warranty does not cover loss, normal wear, damage to our product or the host weapon system resulting in whole or in part from abusive or negligent use, unauthorized modification, improperly threaded barrels, improperly mounted suppressors, improperly loaded or re-loaded ammunition, or neglect. Finish wear is cosmetic and is not covered by this warranty. Any repairs to the unit made necessary by the above mentioned factors may be invoiced to the owner at a maximum of 30% of current MSRP for the most comparable product. The individual barrel lengths and calibers warranted are listed in the manual you receive with your product, or on the product page (applicable only to the most current model of the respective product). In all cases refer to the product manual for product limitations prior to using a Griffin Armament product. Warranty is subject to change without notice.

To learn more about Griffin Armament® and the kit we provide, please visit us on the web at www.GriFFinArmament.com or keep track of our social media pages:

Instagram



Facebook



YouTube



Rumble





CS@GRIFFINARMAMENT.COM

(262)200-0003

Watertown, WI 53094

GRIFFIN
GENERAL
ISSUE
PROGRAM



**GRIFFIN
ARMAMENT**

